



YILDIZ
DEMİR ÇELİK

BEYOND STEEL



www.yildizdemircelik.com/tr/en



YILDIZLAR
YATIRIM
HOLDİNG®

YILDIZ DEMİR ÇELİK A.Ş. IS A SUBSIDIARY OF YILDIZLAR YATIRIM HOLDİNG

YILDIZLAR YATIRIM HOLDİNG continues the investment journey initiated by its founder, the late Mr. Hasan YILDIZ, in 1890, with a vision focused on development and investment, as one of Türkiye's largest groups.

8 Sectors


YILDIZENTEGRE


İGSAS


**YILDIZ
DEMİR ÇELİK**


**YILDIZLAR
DENİZ İŞLETMECİLİĞİ A.Ş.**


YILDIZCHEM


**İGSAS
SİGORTA**


YILDIZENERJİ

Logistics



5.000+
Employees



14 Facilities, 2 port
in Türkiye and
in the world

70+ Countries
Exports





About Us

YILDIZ DEMİR ÇELİK is the investment in the iron and steel sector of YILDIZLAR YATIRIM HOLDİNG that is making major investments in Türkiye and in the world.

Established in 2018, Yıldız Demir Çelik is the **first iron and steel facility in Türkiye that uses recycled Gray Water in production.**



About us



The quality laboratories were accredited by TÜRKAK under the **ISO 17025 TESTING LABORATORIES ACCREDITATION**

The foundations have been laid.

Production has started for the first time.

In it's first year in the industry, it certified it's aim to provide services beyond customer expectations by obtaining the **ISO 10002-CUSTOMER SATISFACTION CERTIFICATE.**

All lines have been activated.

The second galvanizing line and the second slitting line have been activated.

2016

2018

2019

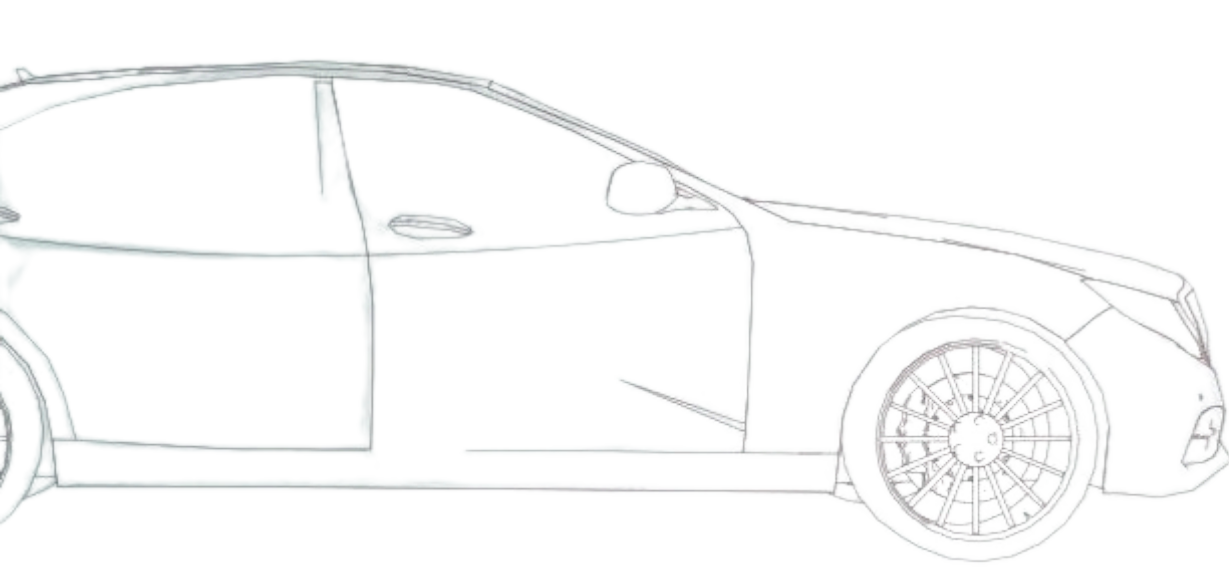
2020

2021

2023

In it's third year in the industry, it certified it's sustainable high-quality production by obtaining the **IATF 16949 AUTOMOTIVE QUALITY MANAGEMENT SYSTEM CERTIFICATE.**





Our Vision

Where are we running?

Until 2030, we will become a global brand that has been integrated into iron and steel and leaves a mark in every area where steel comes to life.

Our Mission

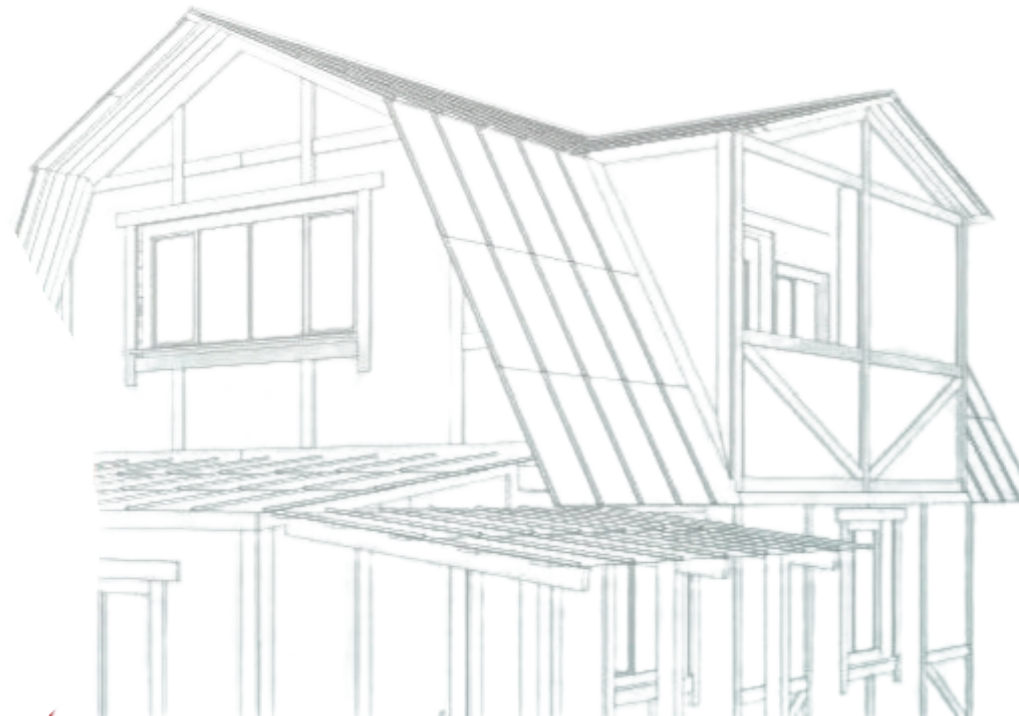
Why do we exist?

We exist to increase the competitive advantage of our business partners with our value-added products.

Our Values

Where do we get our strength from?

From saying '**Human First**'.
From our **innovative** perspective.
From our passion for **quality**.
From our determination to **succeed**.
From being **one heart** for the same goal



Sectors

YILDIZ DEMİR ÇELİK aims to contribute to Türkiye's international competitiveness with its products, to provide raw material sources to various sectors including automotive and white goods, and to develop innovative approaches with innovative products

Industrial Pipe Profile

White Goods

Brown Goods

Automotive

Consumer Goods (Shelves, Home and Office Supplies)

Radiator Panel

Sandwich Panel

Packaging

Heating, Ventilating and Air Conditioning

Energy

Agriculture and Livestock

General Manufacturing

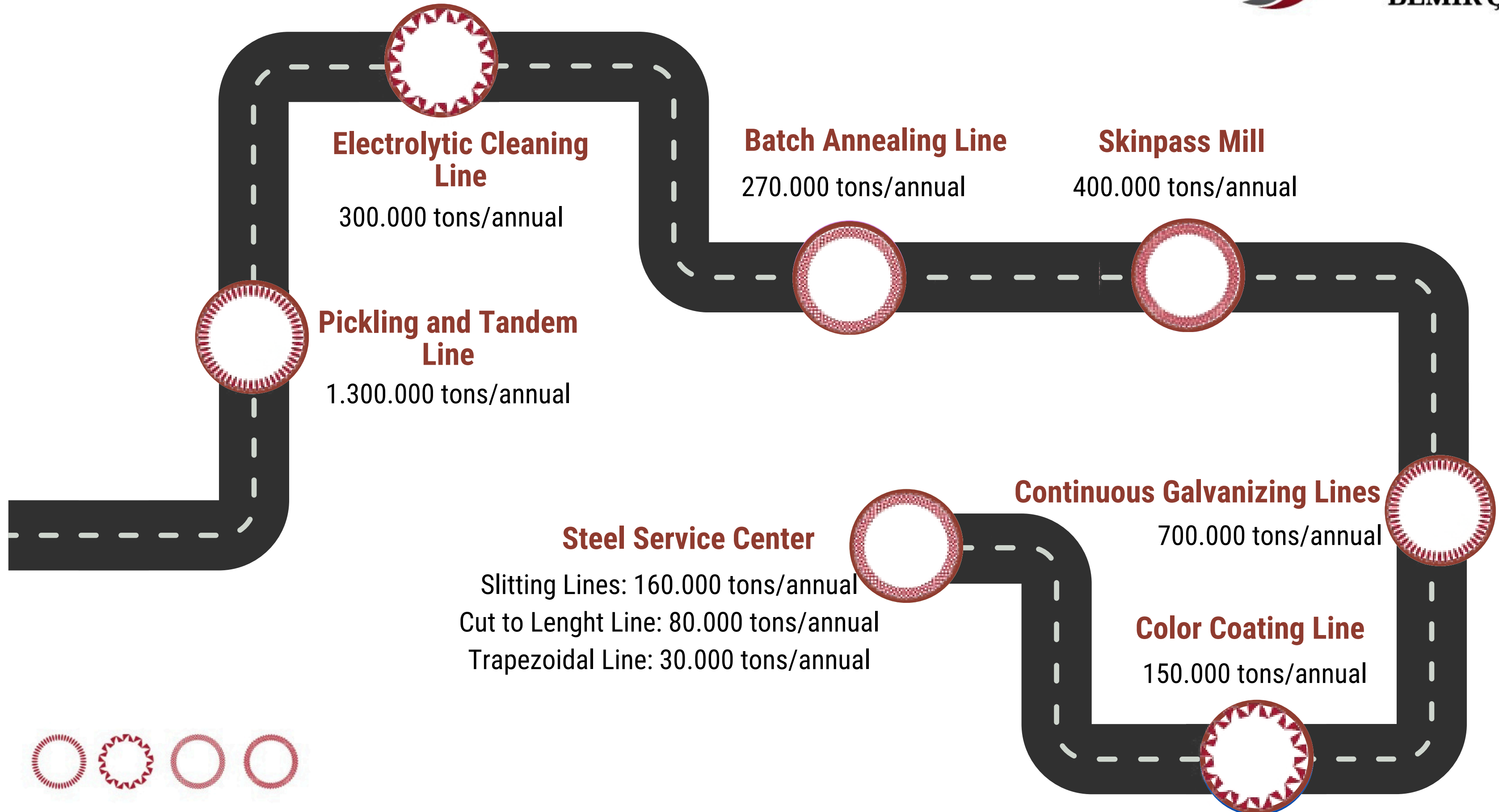
Steel Service Center



Production Lines



YILDIZ
DEMİR ÇELİK



Contribution to Turkish Economy

Yıldız Demir Çelik was established to produce the steel needed by the Turkish industry domestically and to help reduce the current account deficit by reducing imports.

According to the May 2024 - May 2025 data from the Steel Exporters' Association:



Cold Rolled Steel Product Group:

3rd



Coated Product Group:

3rd



PICKLING AND TANDEM LINE

Annual Production Capacity

1.300.000 Tons

PICKLED HOT ROLLED COIL

THICKNESS

1,20-5,00 mm

WIDTH

700-1600 mm

INNER DIAMETER

610 mm

MAX.COIL WEIGHT

30 Tons

FULLHARD COIL

THICKNESS

0,20-2,50 mm

WIDTH

700-1600 mm

INNER DIAMETER

508-610 mm

MAX.COIL WEIGHT

30 Tons





PICKLED HOT ROLLED PRODUCTS

Hot rolled Pickled steel for cold forming and deep drawing

DD11, DD12, DD13, DD14

Pickled HSLA Steels

S315MC, S355MC, S420MC, S460MC, 5500MC

Pickled LPG Cylinder Steels

P245NB, P265NB, P310NB, 9355NB

Pickled unalloyed structural steels

S235JRC, S275JRC

Pickled Structural Steels

S235JR, S235JO, S235J2, S275JO, S275J2, S355JR, S355JO, S355J2

Full Hard Steels

DF01, S215G, S215GF

Pickled Steels Suitable for Use Under Low Pressure

P275SL

Pickled Steels Used in Pressure Boiler Manufacturing

P235GH, P265GH, P295GH, P355GH



ELECTROLYTIC CLEANING LINE

Annual Production Capacity

300.000 Tons

***Capacity to clean the entire production that will go to the cold product**

THICKNESS

0,20-2,5 mm

WIDTH

700-1300 mm



BATCH ANNEALING LINE

Annual Production Capacity

270.000 Tons

THICKNESS

0,20-2,5 mm

WIDTH

700-1600 mm





YILDIZ
DEMİR ÇELİK

SKINPASS MILL

Annual Production Capacity

400.000 Tons

COLD ROLLED COIL

THICKNESS

0,20-2,50 mm

WIDTH

700-1300 mm

INNER DIAMETER

508-610 mm

MAX.COIL WEIGHT

30 Tons





YILDIZ
DEMİR ÇELİK

CONTINUOUS GALVANIZING LINE - 1

Annual Production Capacity

400.000 Tons

GALVANIZED COIL

THICKNESS

0,25-4,00 mm

WIDTH

700-1300 mm

**COATING WEIGHTS (BOTH
SIDES)**

50-600 g/m²

INNER DIAMETER

508-610 mm

MAX.COIL WEIGHT

30 Tons

SURFACE

A-B



CONTINUOUS GALVANIZING LINE - 2

Annual Production Capacity

300.000 Tons

GALVANIZED COIL

THICKNESS

0,25-2,00 mm

WIDTH

700-1500 mm

COATING WEIGHTS (BOTH SIDES)

50-600 g/m²

INNER DIAMETER

508-610 mm

MAX.COIL WEIGHT

30 Tons

SURFACE

A-B





ZINC COATED (GALVANIZED) PRODUCTS

Galvanized Cold Forming and Deep Drawing Steel

**DX51D+Z, DX52D+Z, DX53D+Z, DX54D+Z,
DX56D+Z**

Galvanized High Strength Low Alloy Steels

**HX260LAD+Z, HX300LAD+Z,
HX340LAD+Z, HX380LAD+Z,
HX420LAD+Z**

Galvanized Dual Phase Steels

DP600 (HCT590X)

Galvanized Structural Steels

**S220GD+Z, S250GD+Z, S280GD+Z,
S320GD+Z, S350GD+Z, S390GD+Z,
S420GD+Z, S450GD+Z, S550GD+Z**





COLOUR COATING LINE



YILDIZ
DEMİR ÇELİK

Coating Types

- Polyester
- Plastisol
- PVDF
- Purpa
- Polyester Wrinkle
- Polyurethane
- Hot Lamination

Annual Production Capacity

150.000 Tons

COLOUR COATED COIL

THICKNESS

0,27-1,23 mm

WIDTH

700-1300 mm

INNER DIAMETER

508-610 mm

MAX.COIL WEIGHT

15 Tons





YILDIZ
DEMİR ÇELİK

STEEL SERVICE CENTER

Annual Production Capacity

Slitting Line-1
80.000 Tons

Slitting Line-2
80.000 Tons

Cut-to-length Line
80.000 Tons

Trapezoidal Line
30.000 Tons

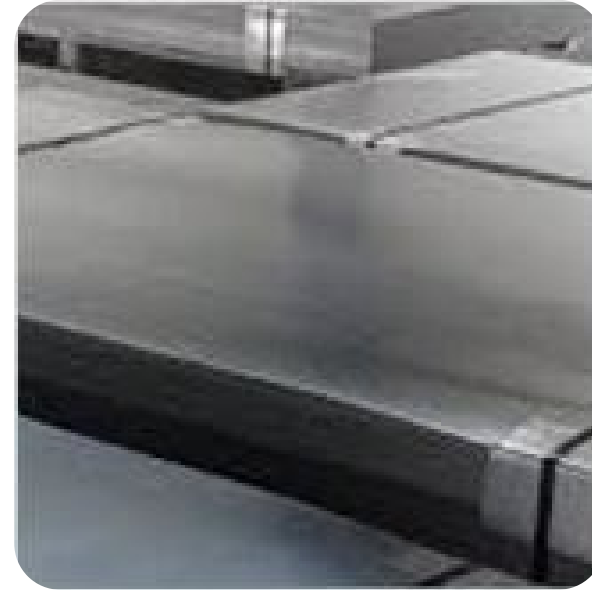


STEEL SERVICE CENTER PRODUCTS



SLITTED COIL

THICKNESS	0,25-5,00 mm
MIN. WIDTH	20 mm
INNER DIAMETER	508-610 mm



CUT-TO-LENGTH STEEL

THICKNESS	0,25-3,00 mm
WIDTH	600-1300 mm
LENGTH	400-3100
MAX.PACKAGE WEIGHT	10 Tons



TRAPEZOIDAL STEEL

THICKNESS	0,30-1,20 mm
5 ROLLS USEFUL WIDTH	860 mm
6 ROLLS USEFUL WIDTH	1050 mm
LENGTH	500-12000
MAX.PACKAGE WEIGHT	10 Tons



TOTAL CONVENIENCE FOR OUR PARTNERS

STARGATE


With our online customer portal Stargate, our customers will be able to access their accounts in a single screen, at any time, and anywhere with Internet connection, and experience the comfort and convenience of our digital innovations.



For more detailed information: ycd.musterideneyimi@yildizdemircelik.com.tr



Quality System Certifications



TS EN ISO 9001:2015 Quality Management System
TS ISO 10002:2018 Customer Satisfaction Management System
TS EN ISO/IEC 27001:2013 Information Security Management Systems
TS EN ISO 50001:2018 Energy Management System
TS EN ISO/IEC 17025 Laboratory Accreditation
IATF 16949 Automotive Quality Management System
ISO 14001 Environmental Management System
TSE Product Certificates- TSE EN 10346
TSE Product Certificates- TSE EN 10130
TSE Product Certificates- TSE EN 10169
TSE Product Certificates- TSE EN 10209
TSE Product Certificates- TS 822



**YOU ARE OUR
PRIORITY!**

YILDIZ DEMİR ÇELİK has certified its commitment to providing services beyond customer expectations by obtaining the ISO 10002 - Customer Satisfaction Management System on the path it has embarked on.





YOUR INFORMATION ASSETS ARE UNDER OUR PROTECTION!

YILDIZ DEMİR ÇELİK, following the audits conducted in 2023, certified that it implements criteria related to information security in all business processes with the ISO 27001:2013 Information Security Management System (ISMS) Certificate; documented with an internationally recognized standard.



Laboratory (Accreditation)

In the light of science



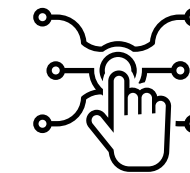
Multiservice

YILDIZ DEMİR ÇELİK A.Ş. Laboratories provide services to **both internal and external customers** with their Chemistry, Mechanics, Paint, and Color Laboratories.



Registered

YILDIZ DEMİR ÇELİK A.Ş. Laboratories are accredited by TÜRKAK according to the **TS EN ISO/IEC 17025** standard for tensile testing, zinc coating weight, and tests applied to painted sheets.



State of the art technology

Since 2018, our laboratories, with a focus on high customer satisfaction and providing accurate and reliable services, have been conducting control tests on all raw materials that directly affect product quality, as well as trials of alternative new raw materials and research activities. These tests are performed in accordance with standards using **state-of-the-art equipment and experienced personnel**.



Automotive Quality Management



YILDIZ
DEMİR ÇELİK

ACHIEVING GREATNESS IS IN OUR DNA!

In our third year in the iron and steel industry, we have crowned our sustainable high quality production with the IATF 16949 Automotive Quality Management System Certificate.



**EITHER DO YOUR JOB DIFFERENTLY
OR DO A DIFFERENT JOB...**

FEHİMİ YILDIZ

CHAIRMAN OF THE BOARD



STAY TUNED, STAY STEEL

İSTANBUL OFİS
Yıldız Demir Çelik A.Ş.
Küçükbakkalköy Mah. Tefik Fikret Cad. No:34
34750 Ataşehir İstanbul / Türkiye
Tel: 0 216 280 69 70 Faks: 0 216 280 69 80
www.yildizdemircelik.com.tr

ÜRETİM TESİSLERİ
Yıldız Demir Çelik A.Ş.
Alikahya O.S.B. 2. Cadde No:2 İzmit / Kocaeli
Tel: 0 262 280 75 00 Faks: 0 262 280 75 04
www.yildizdemircelik.com.tr


YILDIZ
DEMİR ÇELİK